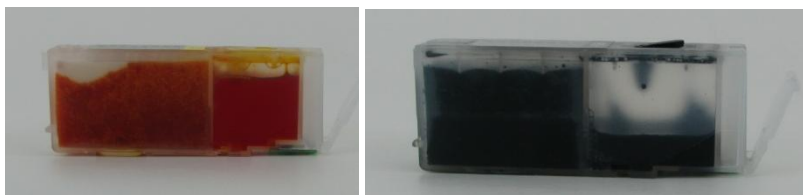


USING THE AFTERMARKET 250/270/251/271 CARTRIDGES FOR CANON

IMPORTANT: FOLLOW INSTRUCTIONS ON STORAGE CLIP REMOVAL. IMPROPER REMOVAL WILL DAMAGE THE HINGE AREA PERMANENTLY

FIRST TIME FILL:

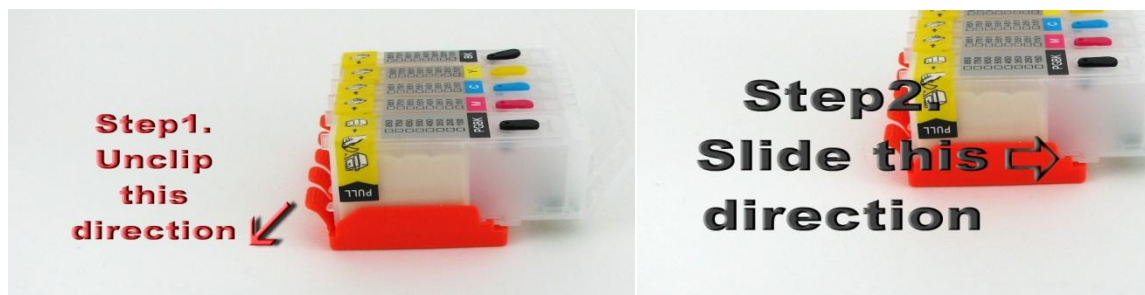
Remove the tape seal to reveal the air breather hole. Slowly fill the cartridge by removing the rubber plug. Put in a little bit of ink at a time. Attempt to soak the bottom part of the tank side. **This MUST be done with the storage clip in place or ink will leak out. Replace the plug when finished.**



REMOVING THE ORANGE STORAGE CLIP:

Note: DO NOT DISCARD THE STORAGE CLIPS. Pay attention to not damaging the hinge area of the clip.

When removing the storage clip it must be done carefully and in the proper manner. Forcing it off can damage the future use of the clip which is needed for refilling. Observe the cartridge and you will notice a small slot



CHIP FUNCTION:

The chip is programmed to use the cartridges as per the equivalent Canon XL capacity. As ink is used, the electronic ink estimator will move the ink levels down towards empty. As soon as the built in optical sensor in the printer detects the ink tank side (no sponge) is empty it will signal that condition by issuing a yellow warning that ink tanks are LOW. Continued use of the printer will drive the estimator down to EMPTY which will issue a RED Warning. At this time, you will refill the cartridge by refitting the orange storage clip. Remember, to slide the hinge upwards into the slot then push towards the front.

When the cartridge is replaced the ink estimator chip will be reset to FULL.

Note: If the cartridge is refilled before reaching empty, the chip will NOT reset to full. It must cycle through the yellow warning and then red and then it will reset after removal and replacement.

SUBSEQUENT REFILLING

When the cartridge needs to be refilled, replace the storage clip as per the reverse instructions, remove the rubber plug and carefully place ink inside the reservoir till full. Do not tilt the cartridge or ink could leak out the hole that the tape seal covered. Replace plug then remove the orange clip.

To maximize the reliability of the cartridge, it is best that the sponge be always fed with ink from the reservoir. So we recommend that it is best to top off the tank/reservoir end any time the opportunity permits. Running out of ink will slowly degrade the condition of the sponge and continually doing so will cause it to not work properly later down the road. If at anytime the sponge is allowed to run out of ink, slowly refill the ink so that the sponge can rewick as much ink as possible without trapping air voids.

SERVICING: Because these aftermarket cartridges do not have the Canon patented air slot in the separator wall, they can sometimes lock up and the printer might appear to have a clogged printhead. To cure this lockup, all that needs to be done is to push the sponge away from the liquid reservoir side. This will then pull the sponge away from the wall a little and then allow air to get past it and thus allow ink to come out. Tapping the cartridge to shift the sponge can also sometimes work as well. Just use a toothpick or a paper clip to shift the sponge.

<https://youtu.be/tG7JkC1nbQ4>